

# MRS. GRAUER LANGUAGE ARTS

Welcome to  
class!

COME IN.  
GRAB YOUR  
COMPUTER &  
HAVE  
A SEAT

**1.** PUT ANY  
NOTES IN  
THE PINK  
BOX

**2.** OPEN EPIC  
AND READ  
SILENTLY  
AT YOUR  
SEAT



**1. Complete Module 8.01  
and take the FORMS  
activity Quiz**

**2. Complete Module 8.01  
and take the FORMS  
activity Quiz**

**TUESDAY**

What is Government?

**MODULE**

Level Up Module 8.01

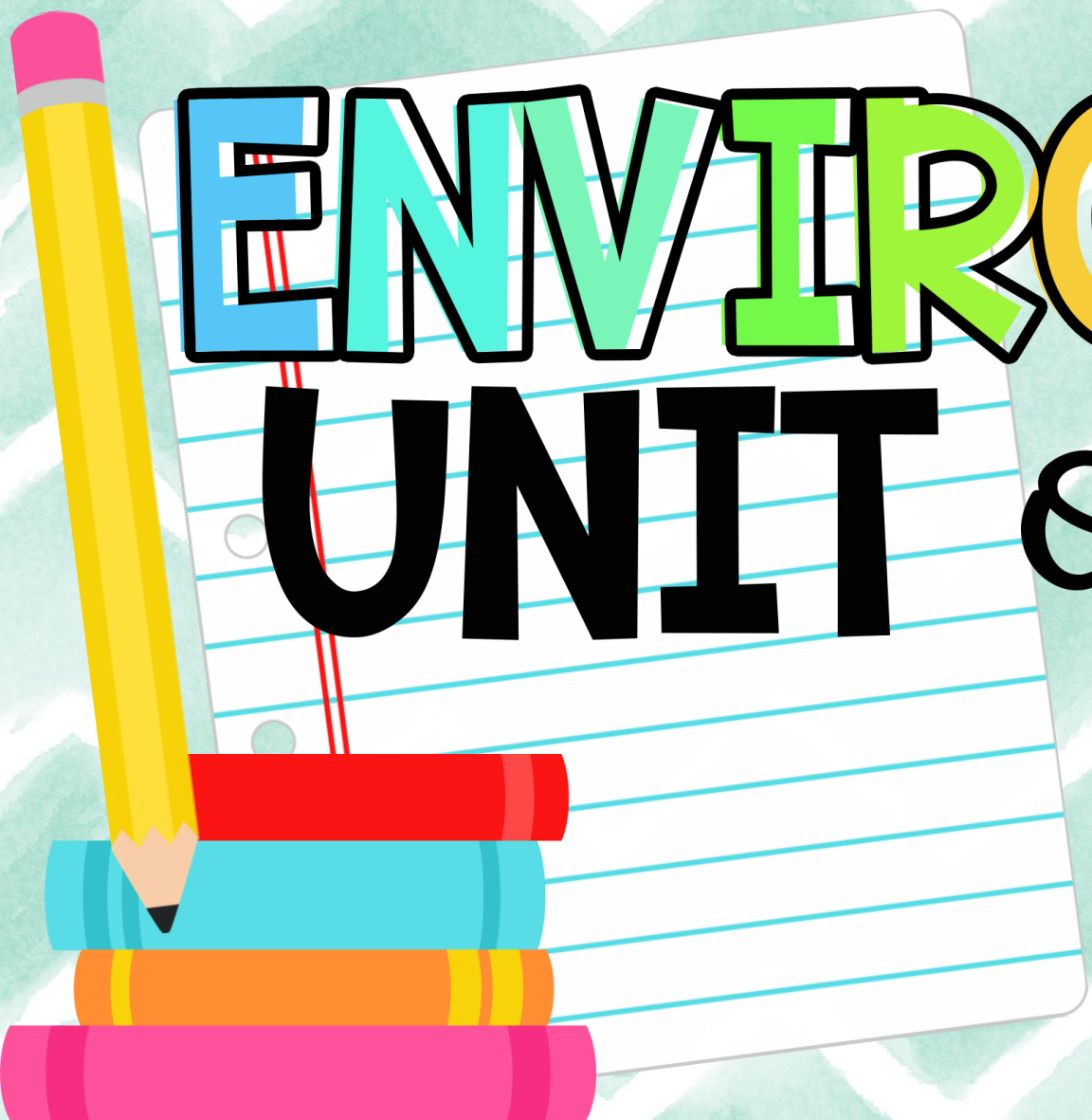
Figuring out the federal  
government Module 8.02

 **ASSIGNMENTS**

FORMS Activity 8.01 

FORMS Activity 8.02 

**When you finish you  
can read books on  
EPIC about our  
government**



# ENVIRONMENTALS

## UNIT *one* WEEK 3

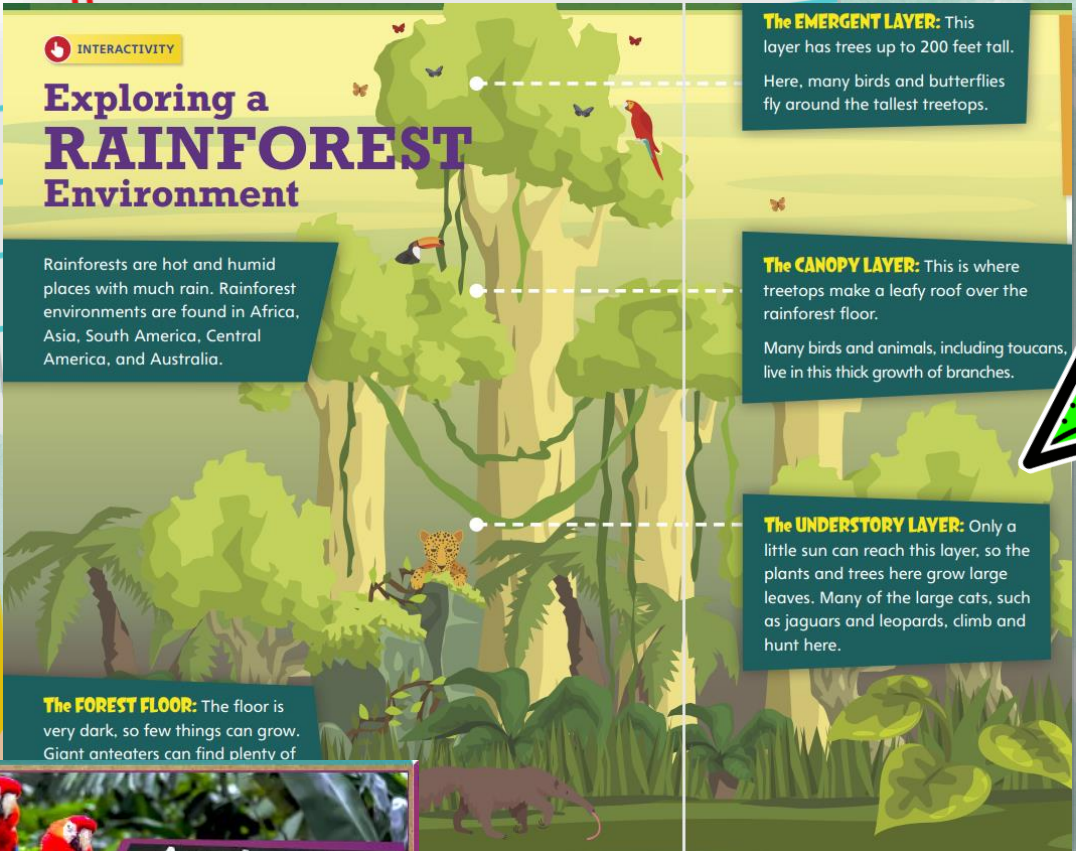
CREATED BY: MARCY GRAUER

DAY 1

# UNIT INTRO

essential question

How does our environment affect us?  
How can an environment affect lives and relationships?



**Turn and Talk** Take turns reading aloud sections of the diagram with a partner. Discuss the main idea and key details of each section. Describe how your food, clothing, home, or activities would change if you lived in a rainforest environment.

**PARTNER** talk



# Exploring a RAINFOREST Environment

Rainforests are hot and humid places with much rain. Rainforest environments are found in Africa, Asia, South America, Central America, and Australia.

**The FOREST FLOOR:** The floor is very dark, so few things can grow. Giant anteaters can find plenty of food here.

**The EMERGENT LAYER:** This layer has trees up to 200 feet tall. Here, many birds and butterflies fly around the tallest treetops.

**The CANOPY LAYER:** This is where treetops make a leafy roof over the rainforest floor. Many birds and animals, including toucans, live in this thick growth of branches.

**The UNDERSTORY LAYER:** Only a little sun can reach this layer, so the plants and trees here grow large leaves. Many of the large cats, such as jaguars and leopards, climb and hunt here.

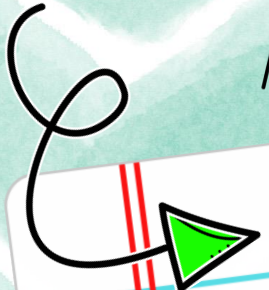
How does our environment affect us?

How can an environment affect lives and relationships?



# VOCABULARY

ACADEMIC words



competition

solve

custom

occasion

organization

competition: the act of trying to win something.

solve: to find the answer to a problem.

custom: something that people have done for a long time.

occasion: a special time or event.

organization: the process of putting things in order.



# VOCABULARY

words



dream

amazing

bored

discovery

proud

dream: has a desired goal or purpose.

amazing: causing great wonder or surprise.

bored: not interested in something.

discovery: something found for the first time.

proud: feeling good about yourself or something.

## TURN & TALK

Use the vocabulary words in a sentence with your partner.

# GENRE

## Realistic Fiction

Realistic fiction is a made up story that could possibly happen in real life. It may include imaginary characters who act like real people in real situations.

The characters in a realistic fiction story may be

Major character: The main character and other characters who are important to the plot.

Minor characters: Characters who do not play an essential role in the lot of events.

Characters may narrate as a character within the story this is called first-person point of view.

Or Narrate as an observer this is called third-person point of view.



# GENRE

Watch for ways the characters change in a realistic fiction story!



**TURN and TALK** Discuss with a partner how realistic fiction is similar to and different from a traditional tale. Use the Realistic Fiction Anchor Chart to help you compare and contrast the genres. Take notes on your discussion.

## REALISTIC FICTION ANCHOR CHART

### PURPOSE:

- To entertain or tell a story

### TEXT STRUCTURE:

- Events are often told in order, or in sequence.
- The story has a beginning, middle, and end.

### ELEMENTS:

- The setting is a real place or a place that could be real.
- Characters behave like real people.
- The plot includes events that could happen in real life.

# INTRODUCE

the text

Before you begin...

Notice

Generate Questions

Connect

Respond

**Notice**

what you would like to know more about.

**Generate Questions**

to clarify information.

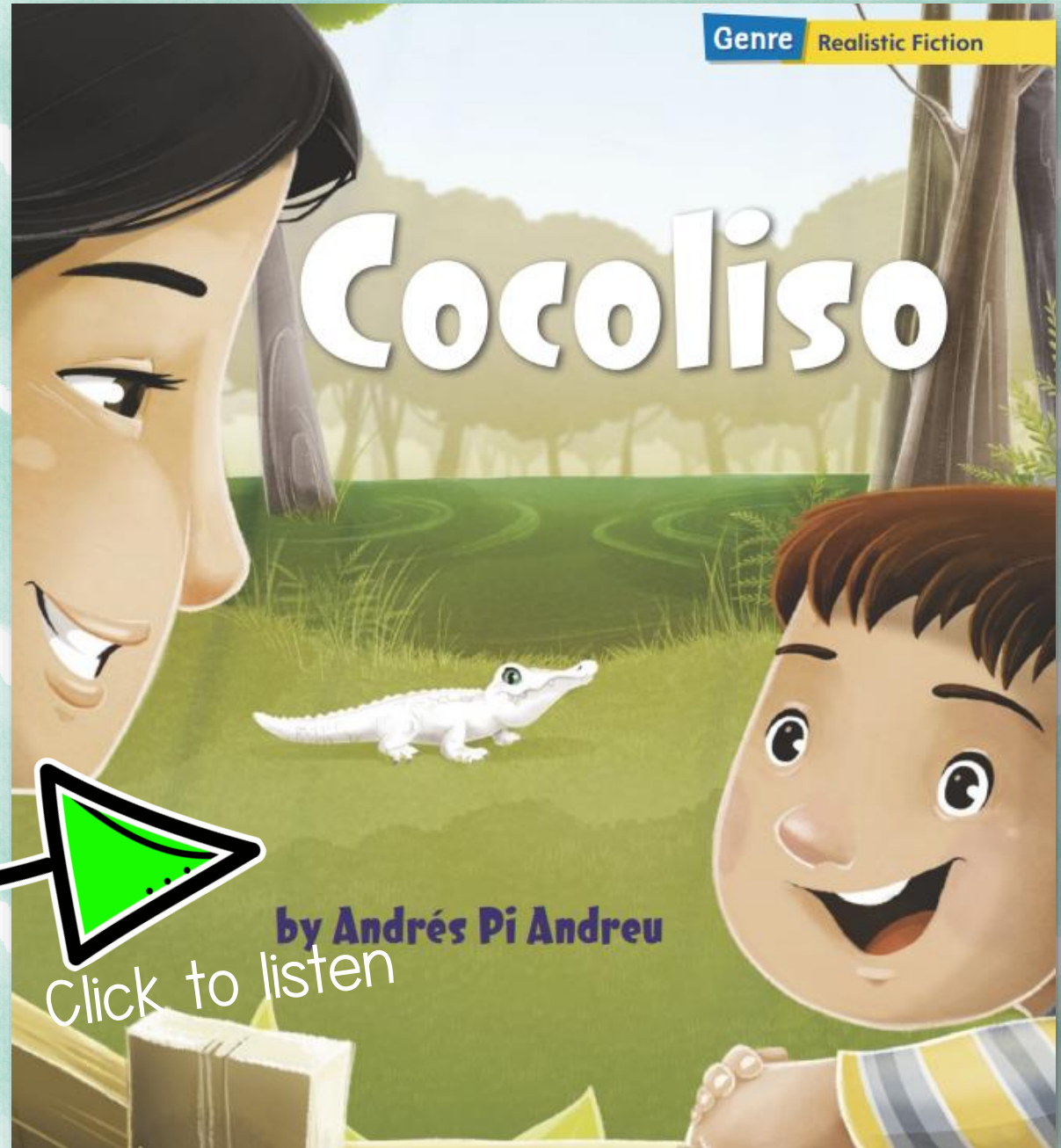
**First Read**

**Connect**

this text to other texts you have read.

**Respond**

by discussing your thoughts with others as you read.



# INDEPENDENT work

Complete  
your  
Vocabulary  
words study  
sheet

## VOCABULARY UNIT 1 WEEK 3

Define what the vocabulary word means and draw a picture to illustrate it.

In the circle write the page number you found the word in the story

dream

A rectangular card with a white circle in the top right corner. Below the card are three horizontal lines for writing.

amazing

A rectangular card with a white circle in the top right corner. Below the card are three horizontal lines for writing.

bored

A rectangular card with a white circle in the top right corner. Below the card are three horizontal lines for writing.

discovery

A rectangular card with a white circle in the top right corner. Below the card are three horizontal lines for writing.

proud

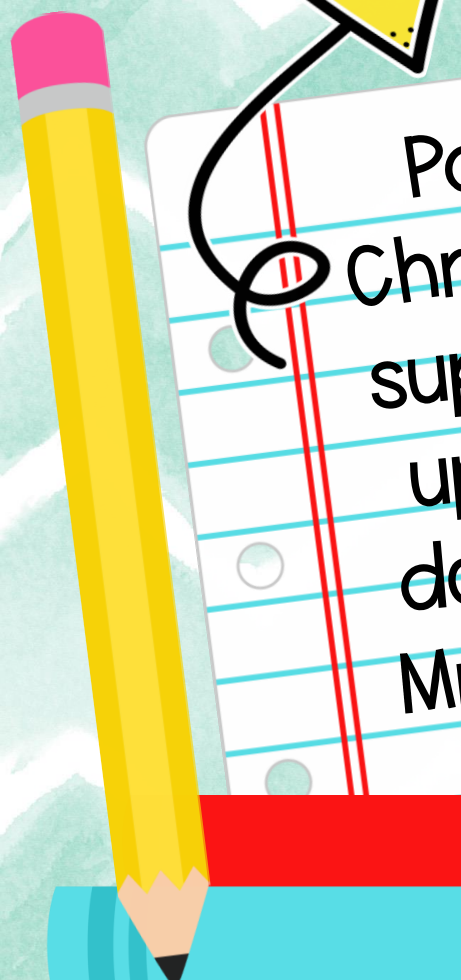
A rectangular card with a white circle in the top right corner. Below the card are three horizontal lines for writing.

drifting

A rectangular card with a white circle in the top right corner. Below the card are three horizontal lines for writing.

Add page numbers where you found the word in the story.

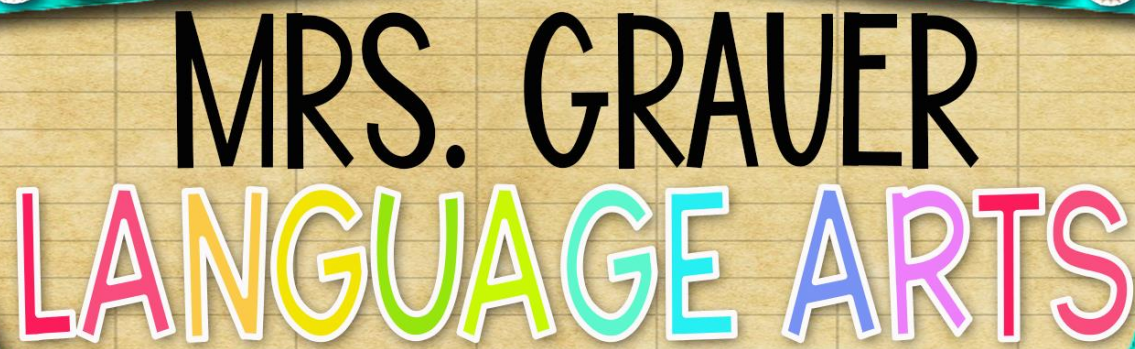
10:25 A.M.



Pack up your  
Chromebook and  
supplies and line  
up at the back  
door to head to  
Mrs. McInerney's  
Class



Bye Bye



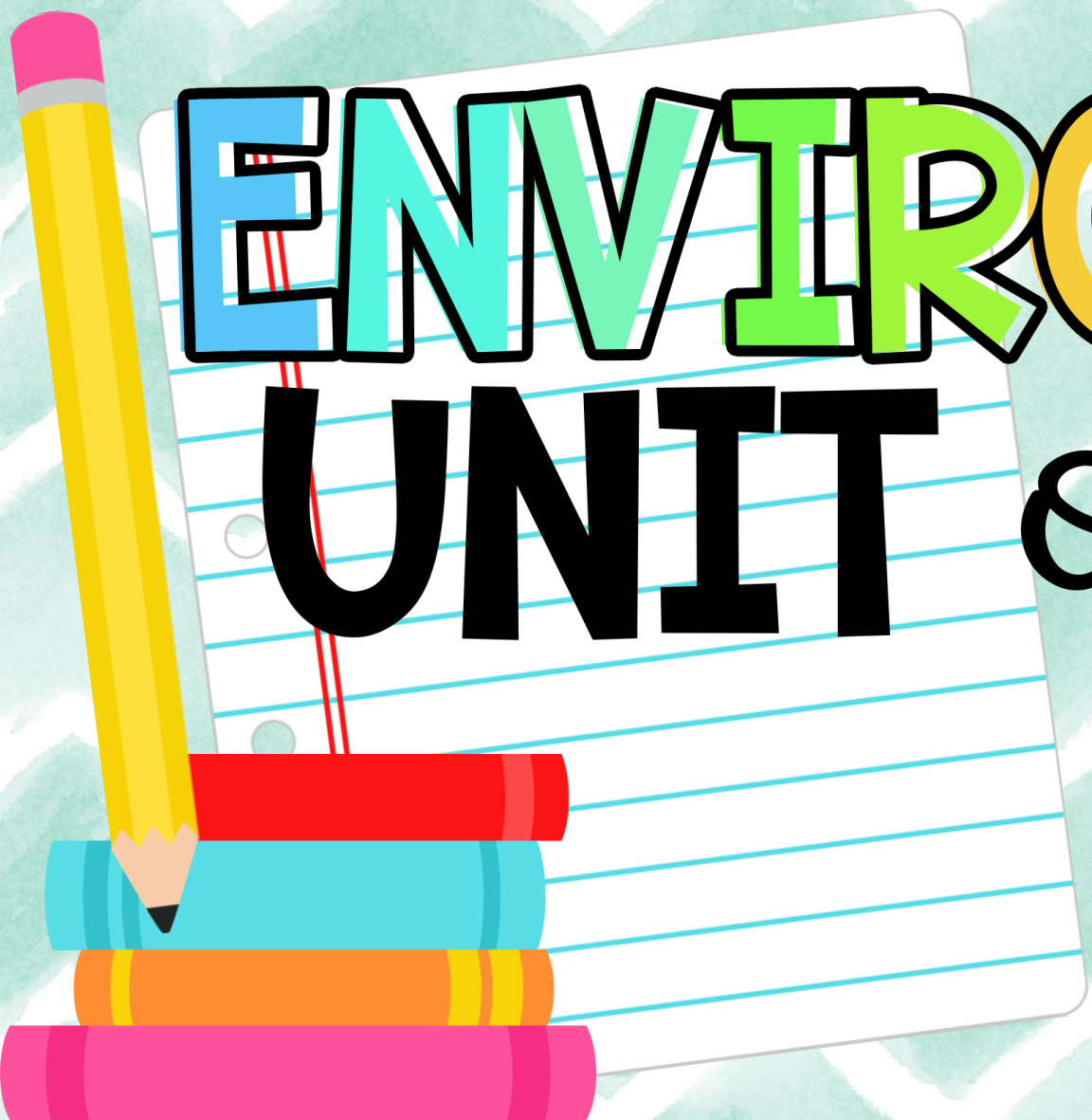
# MRS. GRAUER LANGUAGE ARTS



Welcome to  
class!  
**COME IN.  
& HAVE  
A SEAT**

**1.** TAKE OUT  
YOUR SNACK  
AND ENJOY  
IT!

**2.** OPEN EPIC  
AND READ  
SILENTLY  
AT YOUR  
SEAT



# ENVIRONMENTALS

## UNIT

*one* WEEK 3

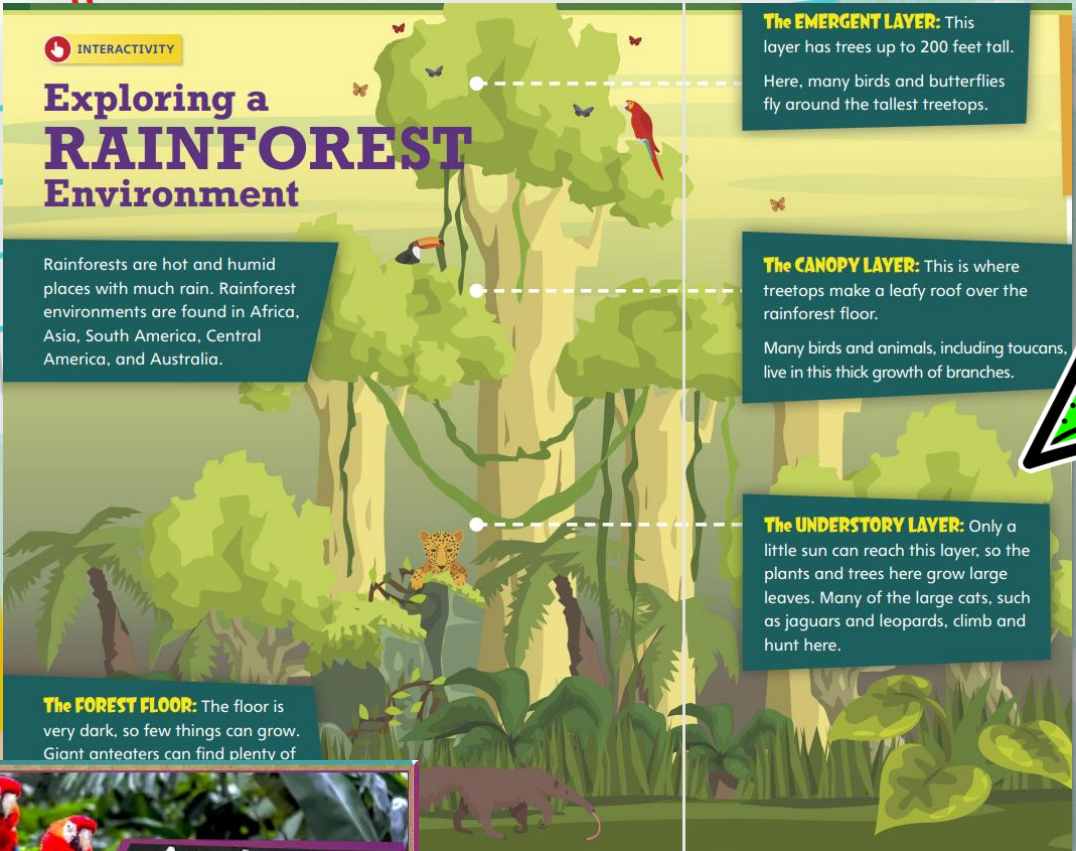
CREATED BY: MARCY GRAUER

DAY 1

# UNIT INTRO

essential question

How does our environment affect us?  
How can an environment affect lives and relationships?



**Turn and Talk** Take turns reading aloud sections of the diagram with a partner. Discuss the main idea and key details of each section. Describe how your food, clothing, home, or activities would change if you lived in a rainforest environment.

**PARTNER** talk



# Exploring a RAINFOREST Environment

Rainforests are hot and humid places with much rain. Rainforest environments are found in Africa, Asia, South America, Central America, and Australia.

**The FOREST FLOOR:** The floor is very dark, so few things can grow. Giant anteaters can find plenty of food here.

**The EMERGENT LAYER:** This layer has trees up to 200 feet tall. Here, many birds and butterflies fly around the tallest treetops.

**The CANOPY LAYER:** This is where treetops make a leafy roof over the rainforest floor. Many birds and animals, including toucans, live in this thick growth of branches.

**The UNDERSTORY LAYER:** Only a little sun can reach this layer, so the plants and trees here grow large leaves. Many of the large cats, such as jaguars and leopards, climb and hunt here.

How does our environment affect us?

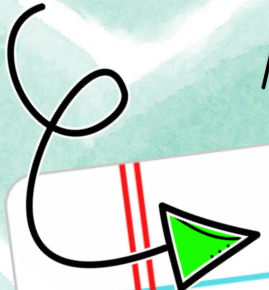
How can an environment affect lives and relationships?





# VOCABULARY

ACADEMIC words



competition

solve

custom

occasion

organization

competition: the act of trying to win something.

solve: to find the answer to a problem.

custom: something that people have done for a long time.

occasion: a special time or event.

organization: the process of putting things in order.



# VOCABULARY

words



dream

amazing

bored

discovery

proud

dream: has a desired goal or purpose.

amazing: causing great wonder or surprise.

bored: not interested in something.

discovery: something found for the first time.

proud: feeling good about yourself or something.

## TURN & TALK

Use the vocabulary words in a sentence with your partner.

# GENRE

## Realistic Fiction

Realistic fiction is a made up story that could possibly happen in real life.

It may include imaginary characters who act like real people in real situations.

The characters in a realistic fiction story may be

Major character: The main character and other characters who are important to the plot.

Minor characters: Characters who do not play an essential role in the lot of events.

Characters may narrate as a character within the story this is called first-person point of view.

Or Narrate as an observer this is called third-person point of view.

# GENRE

Watch for ways the characters change in a realistic fiction story!



**TURN and TALK** Discuss with a partner how realistic fiction is similar to and different from a traditional tale. Use the Realistic Fiction Anchor Chart to help you compare and contrast the genres. Take notes on your discussion.

## REALISTIC FICTION ANCHOR CHART

### PURPOSE:

- To entertain or tell a story

### TEXT STRUCTURE:

- Events are often told in order, or in sequence.
- The story has a beginning, middle, and end.

### ELEMENTS:

- The setting is a real place or a place that could be real.
- Characters behave like real people.
- The plot includes events that could happen in real life.

# INTRODUCE

the text

Before you begin...

Notice

Generate Questions

Connect

Respond

**Notice**

what you would like to know more about.

**Generate Questions**

to clarify information.

**First Read**

**Connect**

this text to other texts you have read.

**Respond**

by discussing your thoughts with others as you read.



# INDEPENDENT work

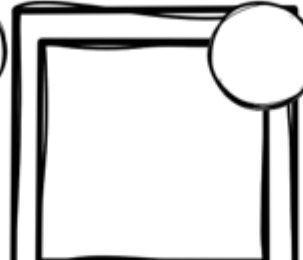
Complete  
your  
Vocabulary  
words study  
sheet

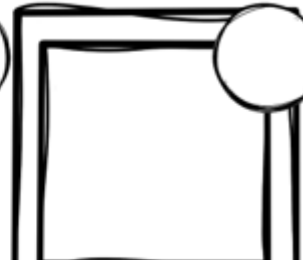
## VOCABULARY UNIT 1 WEEK 3

Define what the vocabulary word means and draw a picture to illustrate it.

In the circle write the page number you found the word in the story

  
dream

  
amazing

  
bored

  
discovery

  
proud

  
drifting

Add page numbers where you found the word in the story.



**1. Complete Module 8.01  
and take the FORMS  
activity Quiz**

**2. Complete Module 8.01  
and take the FORMS  
activity Quiz**

**TUESDAY**

What is Government?

**MODULE**

Level Up Module 8.01

Figuring out the federal  
government Module 8.02

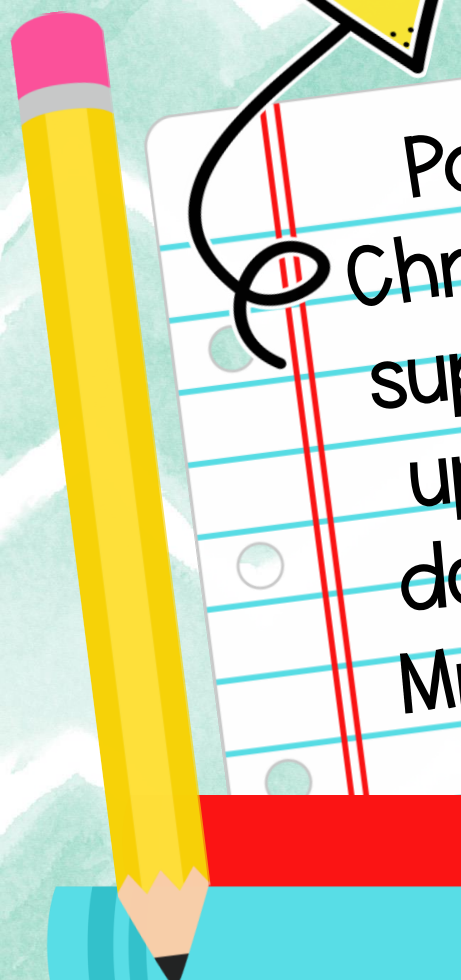
 **ASSIGNMENTS**

FORMS Activity 8.01


FORMS Activity 8.02

**When you finish you  
can read books on  
EPIC about our  
government**

2:30 P.M.



Pack up your  
Chromebook and  
supplies and line  
up at the back  
door to head to  
Mrs. McInerney's  
Class



Bye Bye